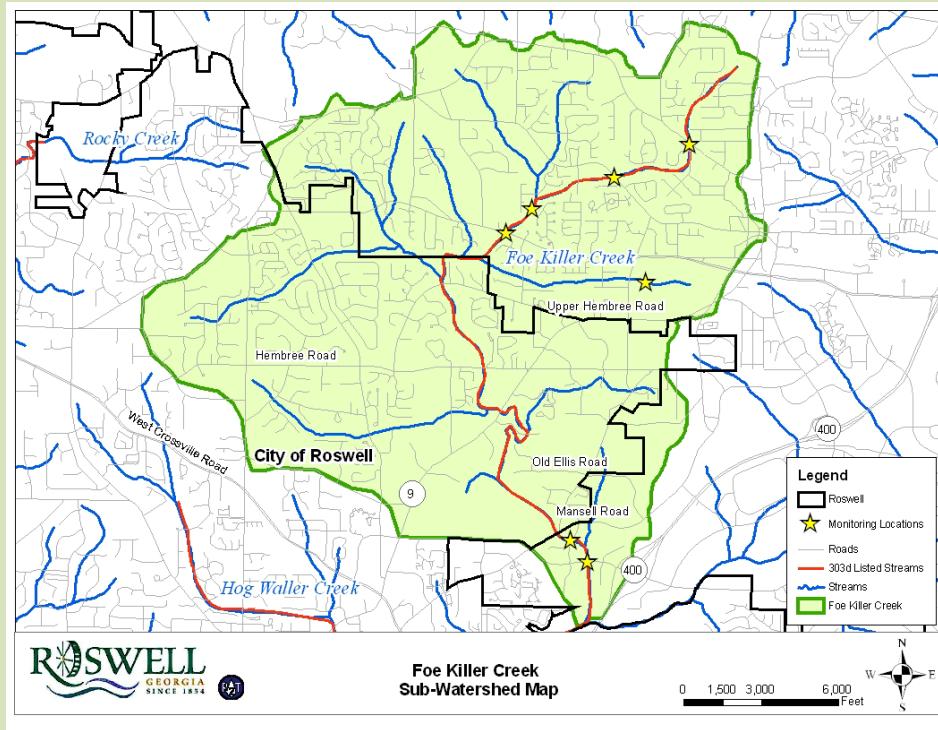


Roswell Stream Highlight - Foe Killer Creek



Foe Killer Creek

Foe Killer Creek is a tributary to Big Creek in the Chattahoochee River Basin, located in the City of Roswell. Foe Killer Creek currently has elevated levels of bacteria specifically *fecal coliform* which are likely caused by the influence of urban runoff. Urban runoff can also cause stream bank failure as seen in the photo below. As residents of the City of Roswell, we can help to improve stream conditions and keep Foe Killer Creek clean.

During storm events, the stormwater flows from roof tops, lawns, roadways and collects pollutants and debris. The storm water then drains to the nearest creeks, rivers and lakes without any treatment or removal of the pollutants. The pollutants in Foe Killer Creek can be harmful to the ecosystem, and impact the fish and other aquatic life.



The storm water then drains to the nearest creeks, rivers and lakes without any treatment or removal of the pollutants. The pollutants in Foe Killer Creek can be harmful to the ecosystem, and impact the fish and other aquatic life.

This is a picture of bank erosion along Foe Killer Creek. There are many small changes we can do to improve the water quality in Foe Killer Creek.

Top Ten tips we can do to improve Foe Killer Creek:

1. Use rubber scrappers to remove fats, oil and grease from cookware, utensils, chafing dishes and serving ware. Avoid disposing fats, oils and grease (FOG) down the kitchen drain. Learn more on proper FOG disposal. http://www.gasustainability.org/documents/ci_fog.html.
2. Check and maintain your septic system regularly. Failing septic systems can cause untreated sewage to leak into the groundwater which provides the base flow of Foe Killer Creek. For additional guidance on septic system maintenance, visit the USEPA site. <http://cfpub.epa.gov/owm/septic/index.cfm>
3. Clean up after Fido! Always carry plastic bags when walking your pet. After you've picked it up and bagged it, throw the bag in the garbage and be sure to wash your hands.
4. Install rain barrels and rain gardens at home to decrease stormwater runoff.
5. Leave a natural vegetative buffer along stream banks to prevent erosion and protect the stream. Consult the Georgia Soil and Water Conservation Guidance for Streambank Restoration for replanting bare areas near the stream.
6. Avoid the use of fertilizer and pesticide. If you have to use them, read the label to ensure proper usage and application rates.
7. Never dump anything into a storm drain or drainage ditch.
8. Don't dispose of household hazardous wastes in sinks and toilets, such as motor oil, paint, batteries, etc.
9. If you have to wash car at home, do so on the lawn, not on pavement.
10. Avoid hosing down paved surfaces such as driveways. Instead use a broom or blower to sweep debris off a paved area.

We can do more to help Foe Killer Creek by reporting pollution to the WRD, Nick Pezzello at swmp@roswellgov.com or (770) 641-3707, such as illegal dumping, clogged and failed catch basins and outlets, potential contaminants, illicit discharges and connections, and sewer overflows, etc. For more information on preventing water pollution visit the Clean Water Campaign website. <http://www.cleanwatercampaign/>