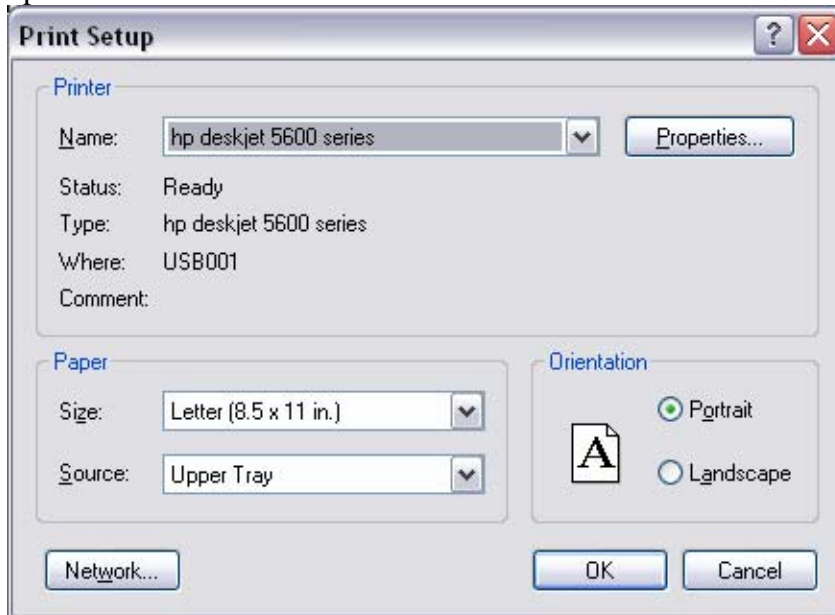


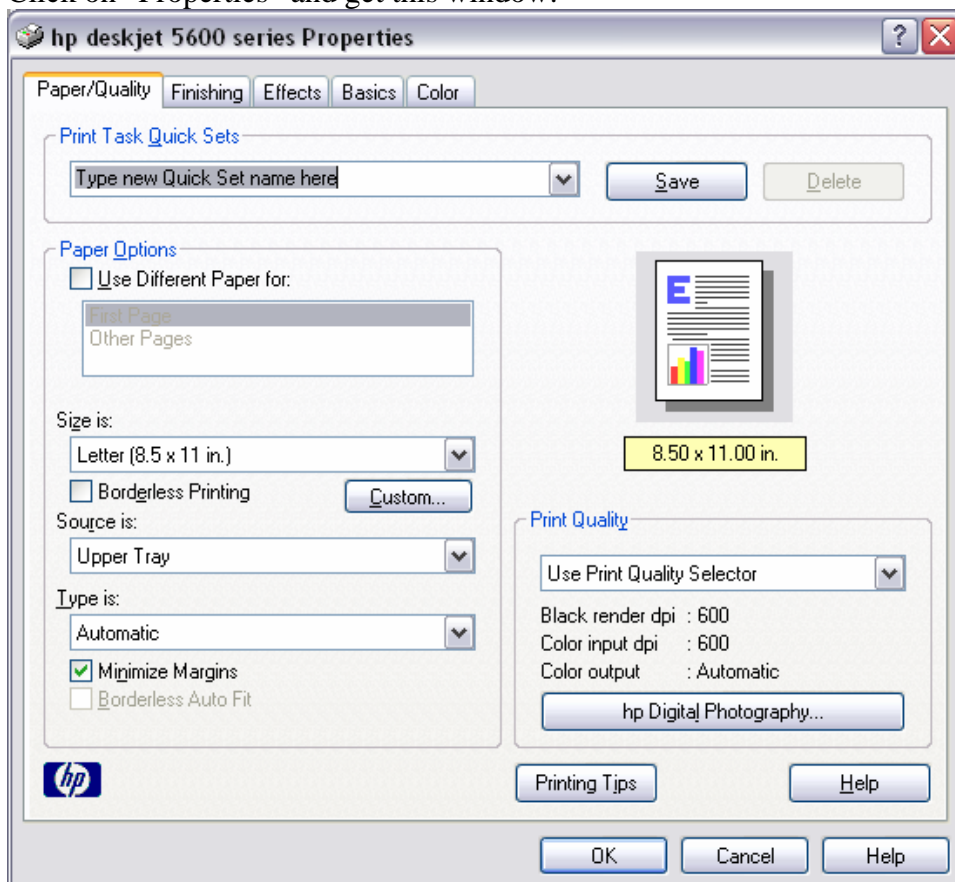
Printing Your Street Atlas

Two-Sided Printing:

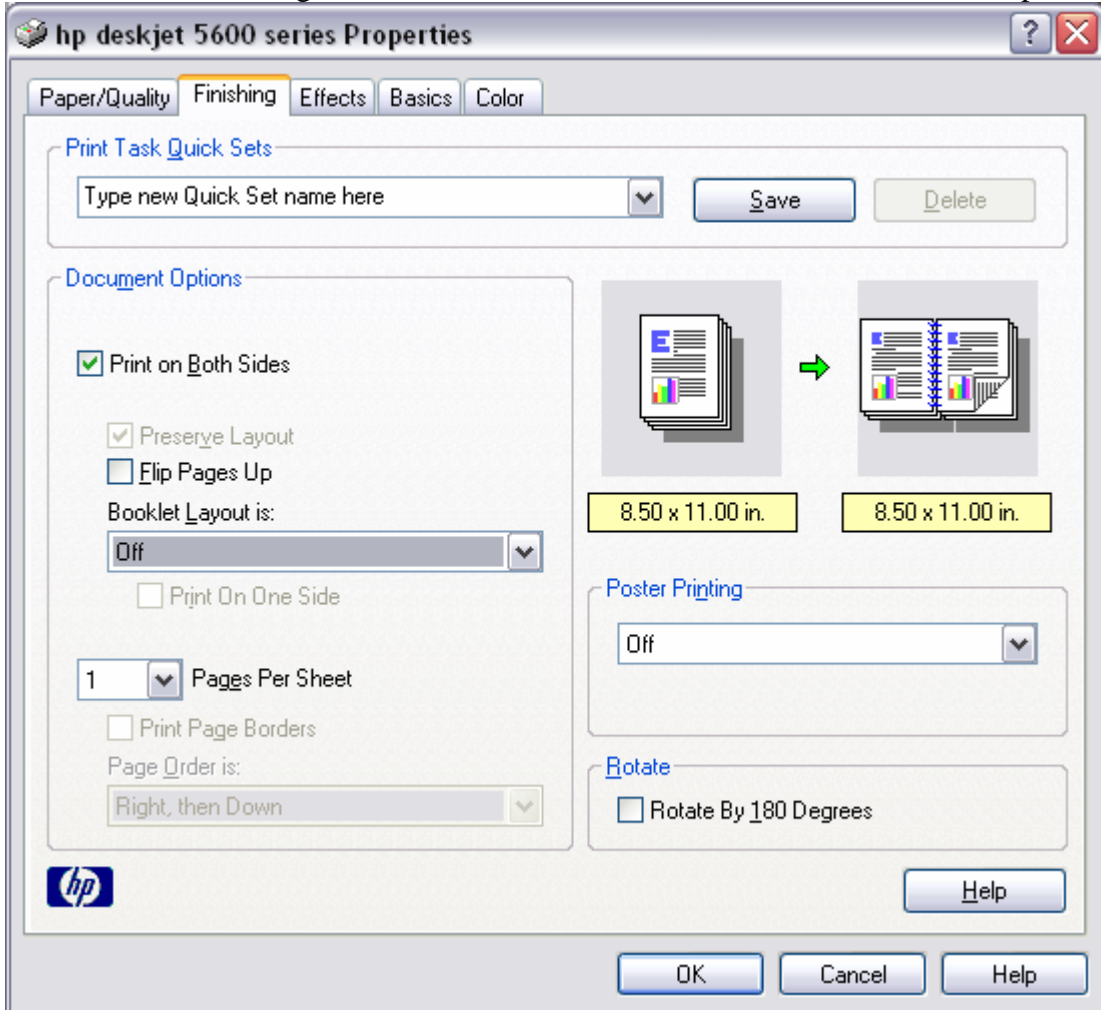
1. Choose “Print Setup” from the “File” menu. This screen (or one similar) should pop up:



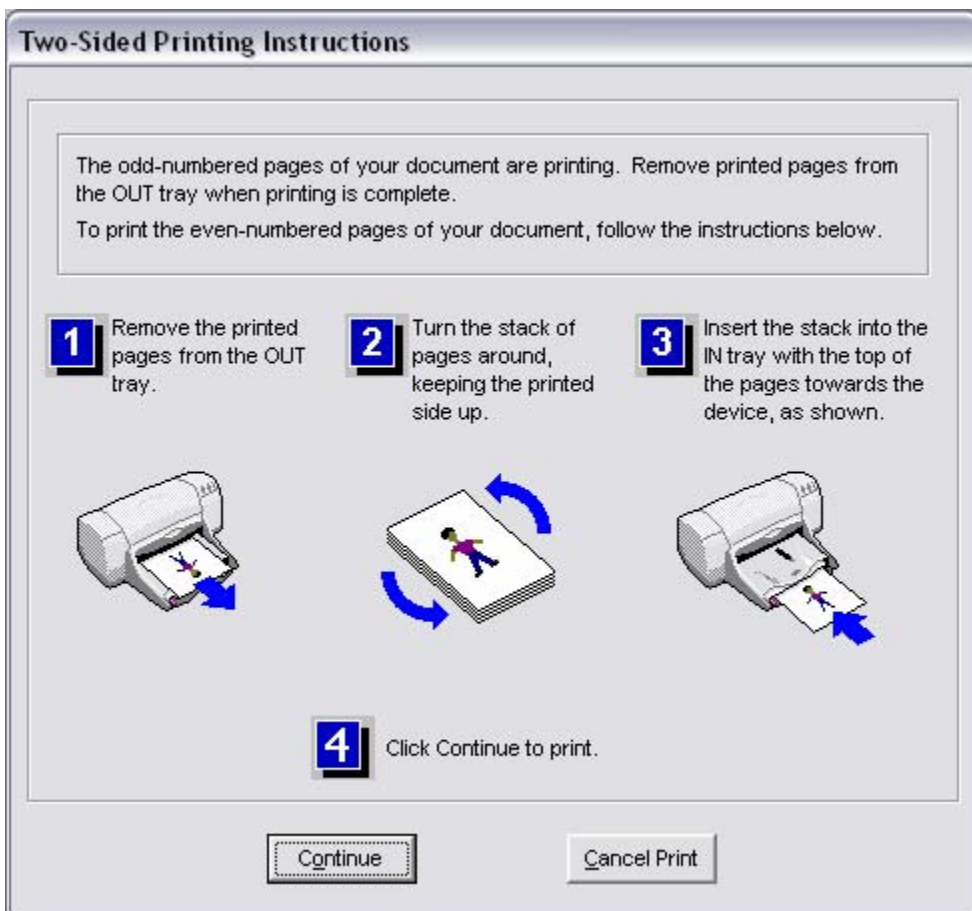
2. Click on “Properties” and get this window:



3. Click on the “Finishing” tab and also check the “Print Both Sides” document option:



4. When the first side of the pages is done printing, follow the directions given through Adobe to print the second side. A window similar to this one will pop up:



5. Follow those directions for placing the paper back into the printer and it should print the second side correctly.

Follow the default printing setup to print each map page on the front of a single sheet.