



Roswell Recycling Center

Roswell
Recycling Center
11570 Maxwell Road
Alpharetta, GA 30004
Phone: 770.442.8822
Fax: 770.442.0963
www.roswellgov.com

MATERIALS

WHAT TO RECYCLE

<i>Large Metal</i>	Grills, lawn mowers (fluids removed), appliances*, etc.
<i>Aluminum</i>	Aluminum cans, aluminum pie plates and clean foil
<i>Small Metal</i>	Steel cans (rinsed), wire coat hangers, screws, nails, punctured helium tanks
<i>Glass Bottles</i>	All glass food and beverage packaging containers – colorless, brown, green and blue (rinsed with all lids & corks removed)
<i>Electronics</i>	Computers, monitors, printers, peripherals, televisions*, stereos and speakers (no wood cases), & all telephones.
<i>Cardboard</i>	Corrugated cardboard such as moving and shipping boxes, single layer cardboard such as cereal, gift and shoe boxes, all paper bags
<i>Plastic</i>	Rinsed plastic food and beverage containers #1 through #7 (except polystyrene #6), plastic bags and bubble wrap
<i>Newspaper</i>	Newspaper including any inserts that came in the newspaper, white packingpaper



Services offered at the Roswell Recycling Center

- Tours
- Community Service hours
- Goodwill donation trailer on site

Services for Roswell Residents only:

- Away From Home event recycling bins
- Paper shredding
- Fluorescent bulb recycling (tubes or u-shaped)
- Latex Paint Collection
- Polystyrene (call for details)



MATERIALS

WHAT TO RECYCLE

RECYCLING SIGNS

Magazines & Phonebooks Magazines, catalogs, telephone books (remove plastic wrapping or bags and magnets)

Text Books Hard cover and soft cover books

Office Paper Most paper found on the top of a desk including copy paper (flat or shredded) and junk mail

Miscellaneous Cell phones, rechargeable and lead acid batteries, tires*, motor oil, antifreeze, liquid waste vegetable oil, printer cartridges, shoes, books for the Friends of the Alpharetta Library book sale

Unacceptable

Food contaminated cardboard such as pizza boxes
Coated cardboard cartons such as milk or juice cartons
Aseptic packaging such as boxes of soup stock
Aerosol spray cans of any kind
Oil-based paint or any other household chemicals
Molded plastics such as toys, buckets, laundry baskets and garbage cans
CD's, DVD's, and VHS Tapes (for VCR)
Glass other than food or beverage packaging such as drinking glasses, vases, candle jars, mirrors, window glass, perfume bottles, make up jars, air freshener containers, glass table tops, Pyrex baking dishes, china, light bulbs, ceramics such as plates and coffee mugs

*denotes fee for non-Roswell residents



Hours of Operation

Monday-Thursday

8:30 AM to 5:30 PM

Friday 8:30 AM to 5 PM

Saturday 8 AM to 5 PM

Sunday 11 AM to 5 PM

Closed:

New Year's Day

Martin Luther King, Jr. Day

President's Day

Memorial Day

Fourth of July

Labor Day

Veteran's Day

Thanksgiving Day (& day after)

Christmas Day

Directions

Georgia 400 South:

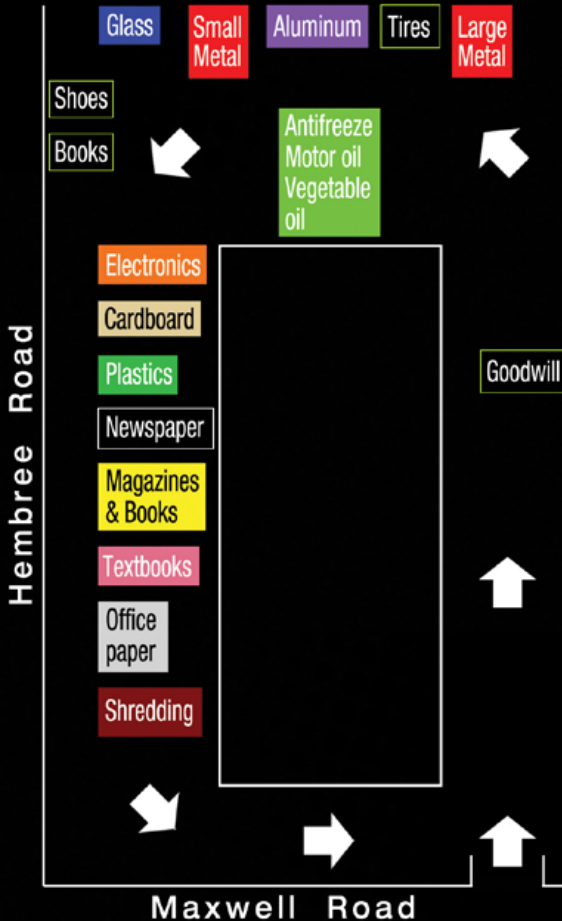
Exit Haynes Bridge road and turn left at the end of the exit ramp. At the second traffic light turn left on to Morrison Parkway/Westside Parkway. Turn right at the second traffic light onto Hembree road. The Recycling Center is on your immediate left.

Georgia 400 North:

Exit Haynes Bridge Road and turn left at the end of the exit ramp. At the third traffic light turn left on to Morrison Parkway/Westside Parkway. At this point, Follow the above directions.

Downtown Roswell:

North Alpharetta Street (Highway 9). Turn right onto Hembree Road. At the second traffic light, turn left onto Maxwell Road. The Recycling Center is on your immediate left.



Like us on Facebook: 

www.facebook.com/RoswellRecyclingCenter



KRB

KEEP ROSWELL BEAUTIFUL.ORG

Promote a healthy environment...

Keep Roswell Beautiful

A non-profit group of concerned Roswell citizens and businesses that are dedicated to improving the quality of the environment in Roswell



Mayor Jere Wood

Councilmembers:

Rich Dippolito

Becky Wynn

Betty Price

Kent Igleheart

Jerry Orlans

Nancy Diamond

City Administrator:

Kay Love

Director of Public Works/

Environmental Department:

Stuart A. Moring, P.E.